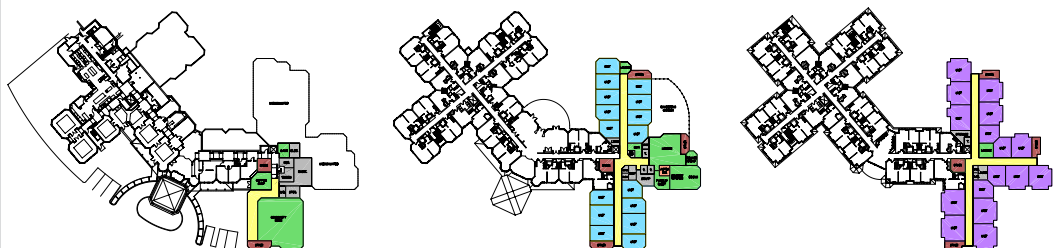




A community based not-for-profit provider, opened Phase I of their assisted living project which contains a plethora of services and accommodations, ranging from Adult Day Care to Independent Housing. EGA and the Jewish Rehabilitation Center of the North Shore are proud of this first phase which was built on a beautiful, albeit difficult, site and boasts a Kosher kitchen for the community and a flexible design which will serve them well into the future.

Phase I includes 82 assisted living units and associated commons. Phase 2 will add 16 additional assisted living units and 32 beds of dementia care. Future phasing will include both skilled nursing and independent living buildings.



*Designs for Living*